

$$E = mc^2$$

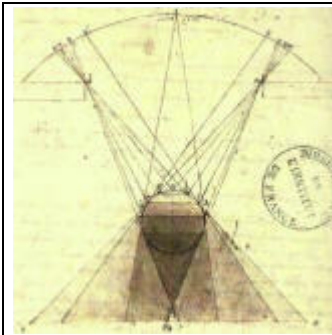
“Magic Eye” 3D image. An example of expanded perception

To learn more on 3D viewing: [www.MagicEye.com](http://www.MagicEye.com)

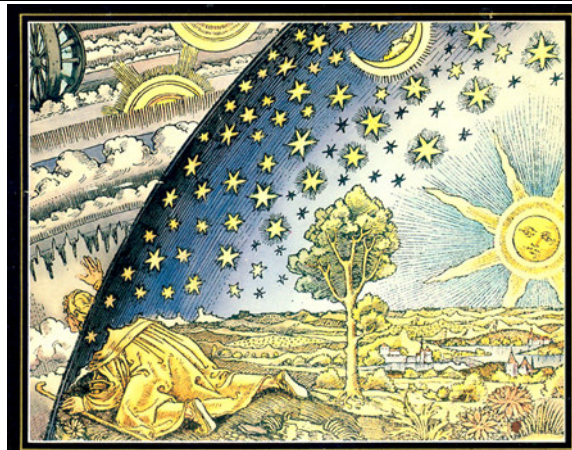
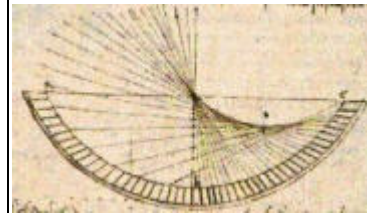
**$E = mc^2$**  This is a way of understanding **Life as simultaneously Substance and Energy**. Dr. Hahnemann was ahead of his time -- **over 100 years before Einstein** he developed a dynamic scientific system of thought that led to a more powerful system of cure for Disease by treating people as both Substance and Energy. When used as part of a series of steps taken using the Heilkunst program, many seemingly unrelated approaches can be integrated into an individualized health improvement journey that frees the person to enjoy more vibrant health.

The expanded perception type of thinking inherent in the practice of homeopathy helps make sense of body and mental symptoms caused by unseen energy dynamics.

For more information: [www.NaturalWorldHealing.com](http://www.NaturalWorldHealing.com)



**$E = mc^2$**   
**The**  
**Expanded Paradigm**



**Insights from Science and Natural Medicine.**  
**Groundwork for the Future of Healthcare.**